

Product numbering/ordering information:

BLE113-A-X

Antenna:
A = Internal
E = External
N = RF pin

Firmware revision

Product code	Description
BLE113-A	BLE113 with integrated chip antenna, 128k flash memory
BLE113-A-M256K	BLE113 with integrated chip antenna, 256k flash memory

WF1 1 1- X

Antenna:
A = Internal antenna
E = External
N = RF pin

Table 1.1. Confirmed Products and Codes

Product Code	Description
WF111-A-v1	WF111 module with internal chip antenna
WF111-E-v1	WF111 module with U.FL connector for external antenna
WF111-N-v1	WF111 module with 50 RF pin (Please contact Silicon Labs sales at www.silabs.com for availability)
DKWF111	WF111-A SDIO evaluation kit
WF111-A-v1-ETSI	ETSI version of WF111-A has 13 channels. This device is not FCC/IC compliant.
WF111-E-v1-ETSI	ETSI version of WF111-E has 13 channels. This device is not FCC/IC compliant .

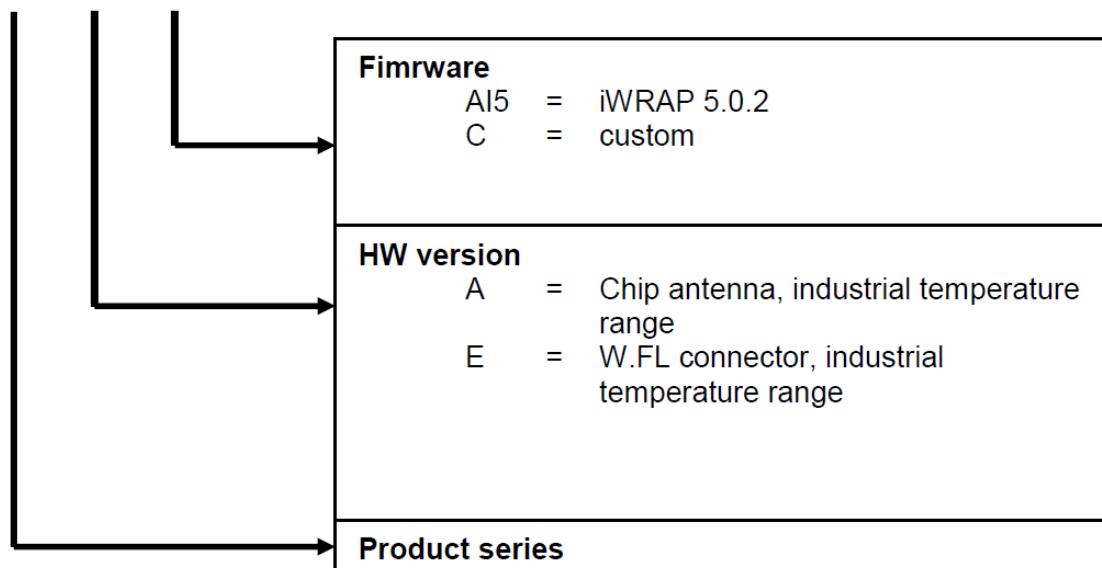
WF121

Product code	Description
WF121-A	WF121 module with integrated antenna
WF121-E	WF121 module with U.FL connector
WF121-N	WF121 module with RF pin. Non-standard product, so minimum order quantity applies. Please contact: sales@bluegiga.com
DKWF121	WF121 development kit

Note: Modules with order code ending in –v1 are sold as engineering samples, while those with code –v2 are production units. The difference between the two is in the microcontroller version used, the –v2 version fixes a hardware bug that in some circumstances may cause rare bit errors. The modules differ in outlook in that the –v1 only has the Bluegiga logo and text “WF121” while –v2 versions also have FCC/IC ID codes and CE logo.

WT32i

WT32i-A-AI

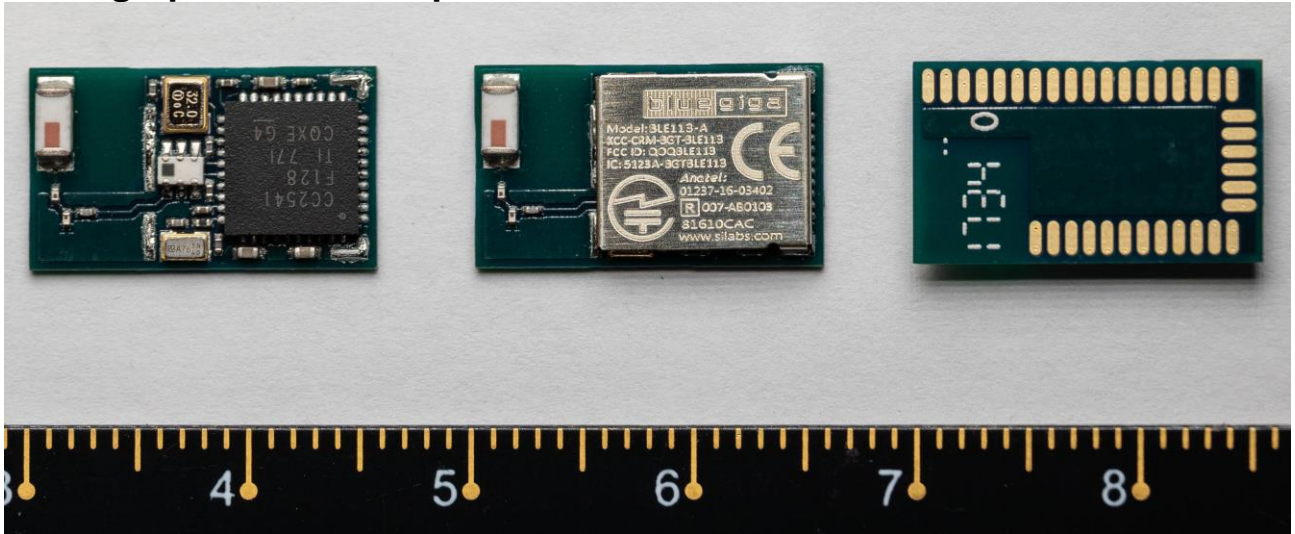
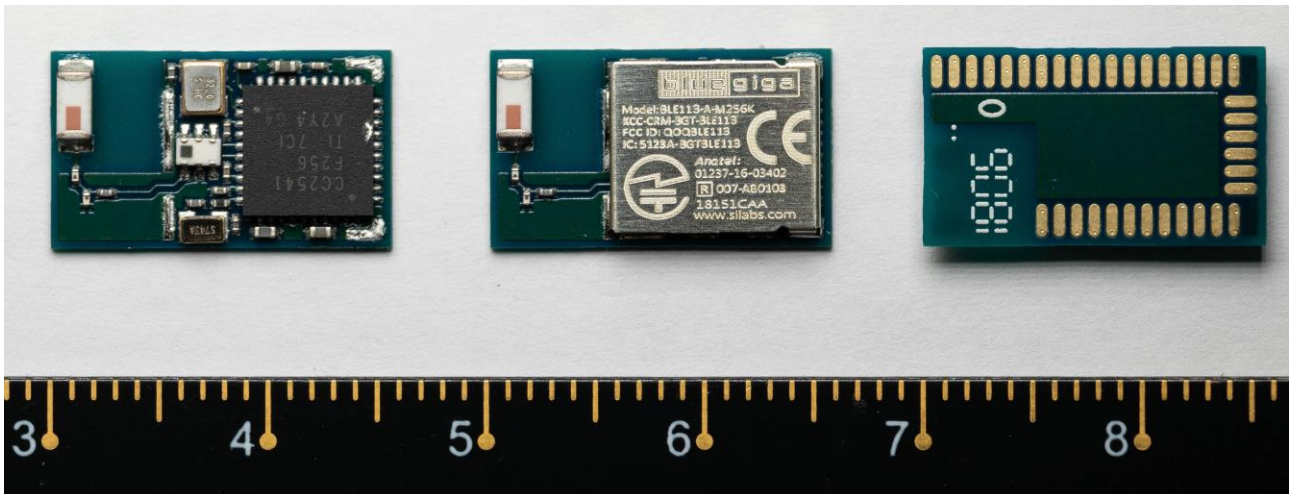


BLED112

BLED112 Overview



- **Bluetooth low energy radio**
 - Frequency: 2402 – 2480 MHz
 - TX power: 0 dBmRX
 - sensitivity: -93 dBm
 - Modulation: GFSK
 - Symbol rate: 1 Mbps
- **Antenna**
 - Integrated PCB antenna
- **Typical line of sight range:**
 - +0dbm: 20-40 meters
 - -20 dBm: ~5 meters

Photographs of the samples:**Figure 1 BLE113-A****Figure 2 BLE113-A-M256K**

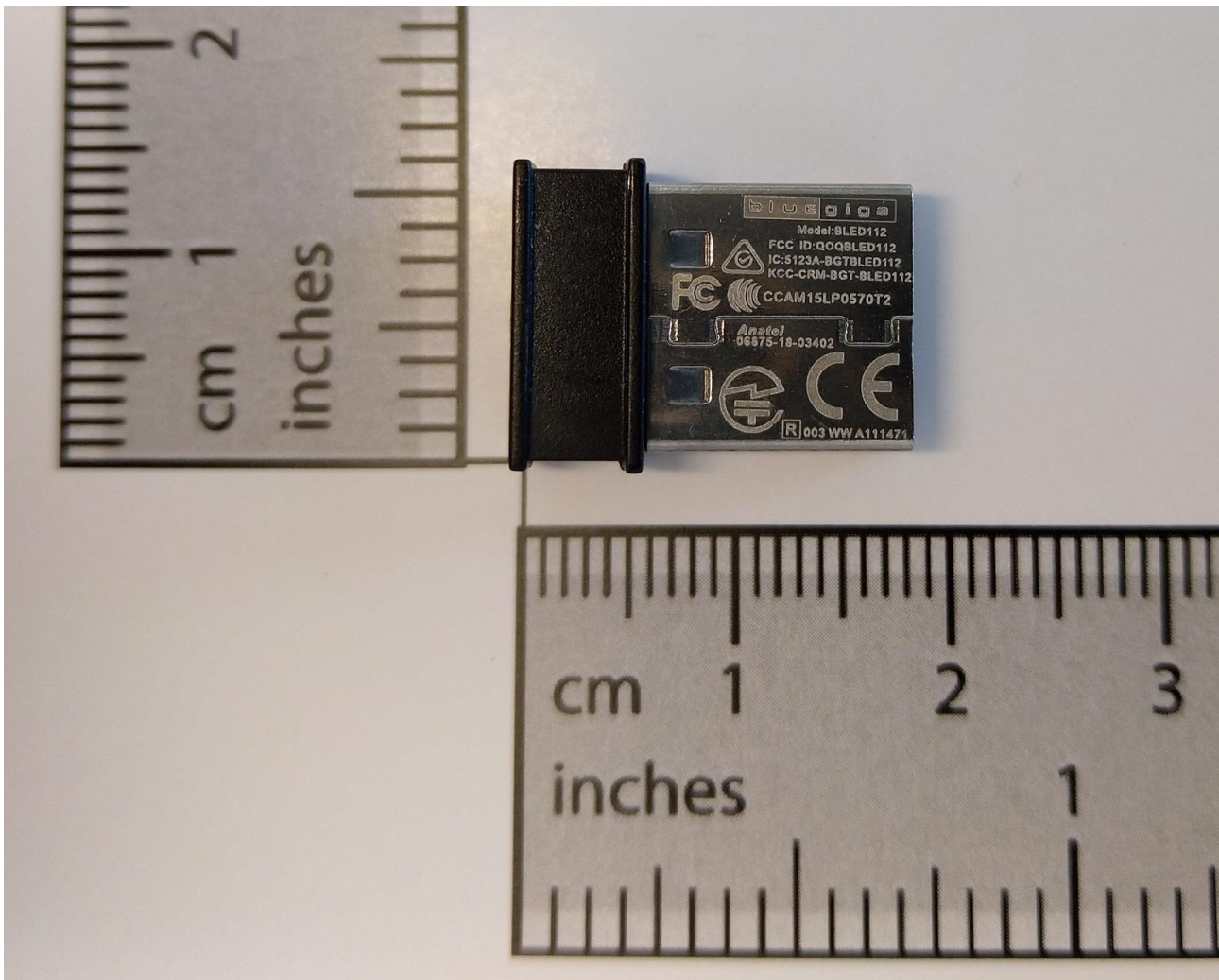


Figure 3 BLED112

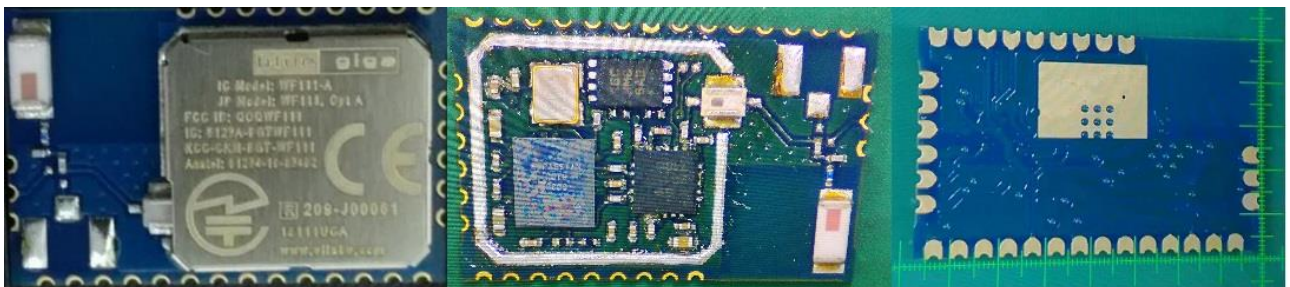


Figure 4 WF111-A

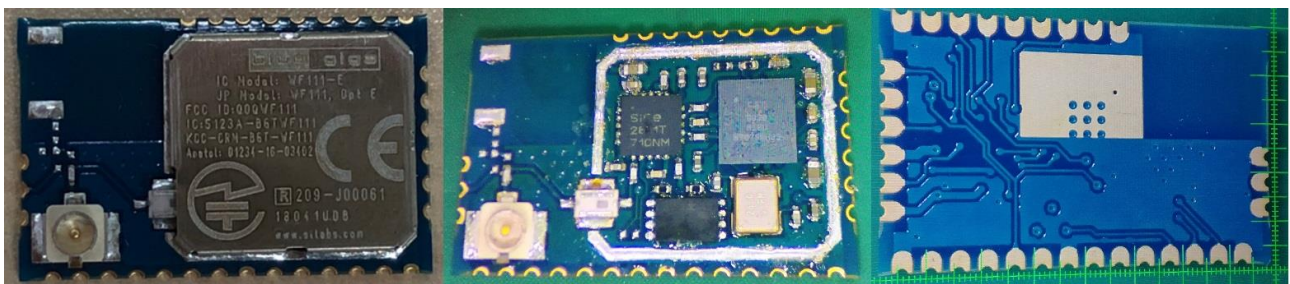


Figure 5 WF111-E

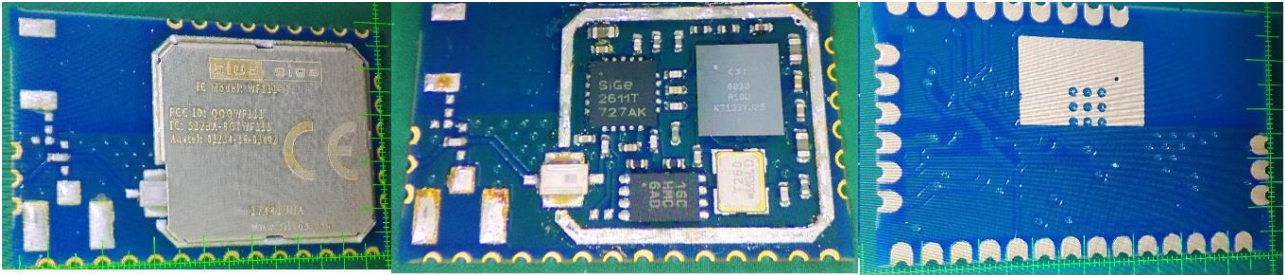


Figure 6 WF111-N

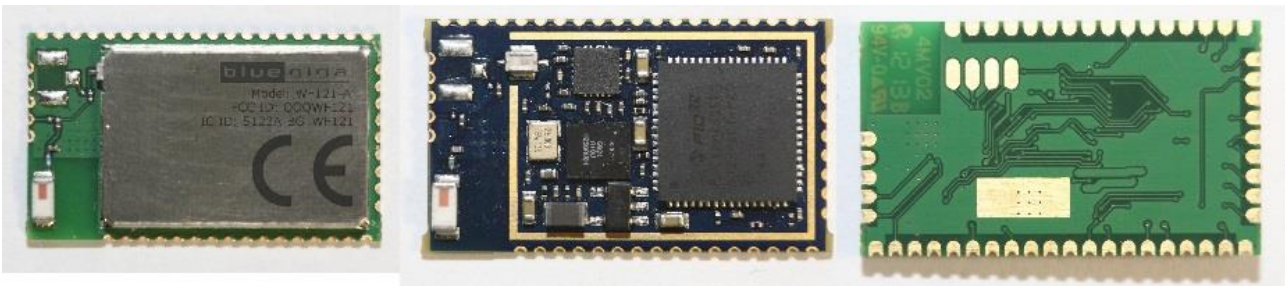


Figure 7 WF121-A

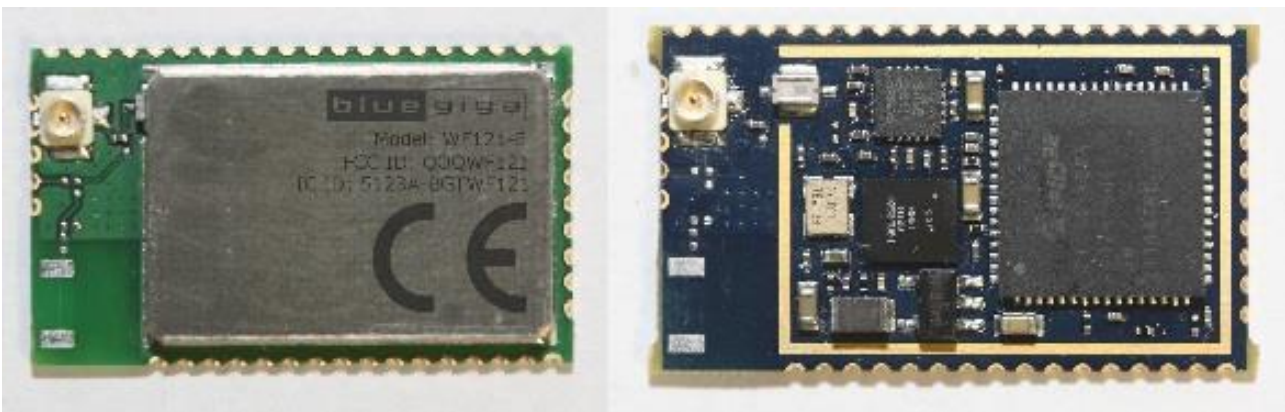


Figure 8 WF121-E

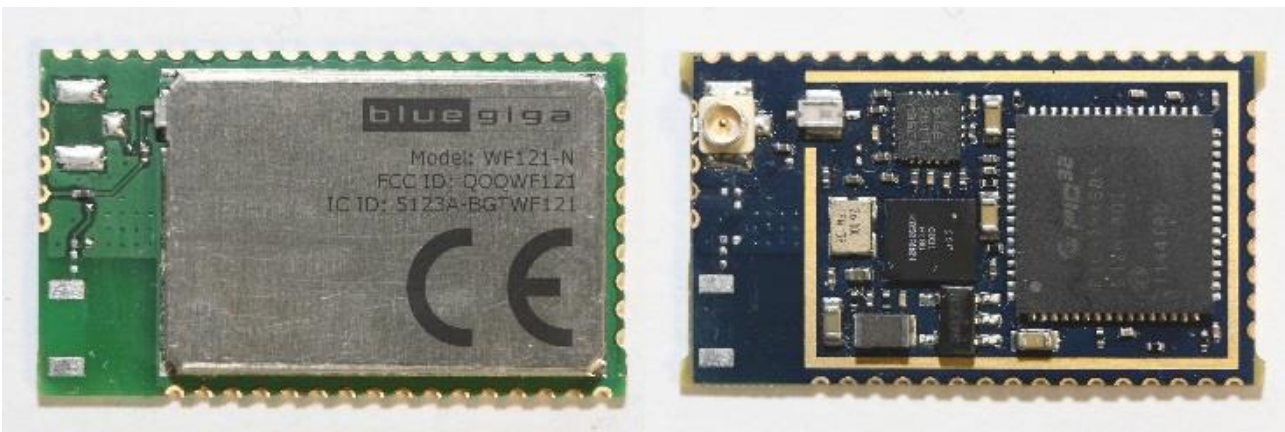


Figure 9 WF121-N

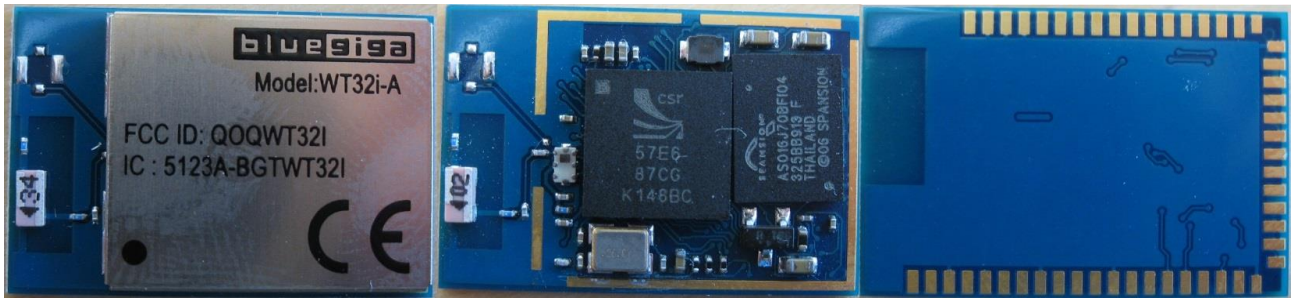


Figure 10 WT32i